

Features

- Advanced high cell density Trench technology
- Super Low Gate Charge
- Excellent CdV/dt effect decline
- 100% EAS Guaranteed
- Green Device Available

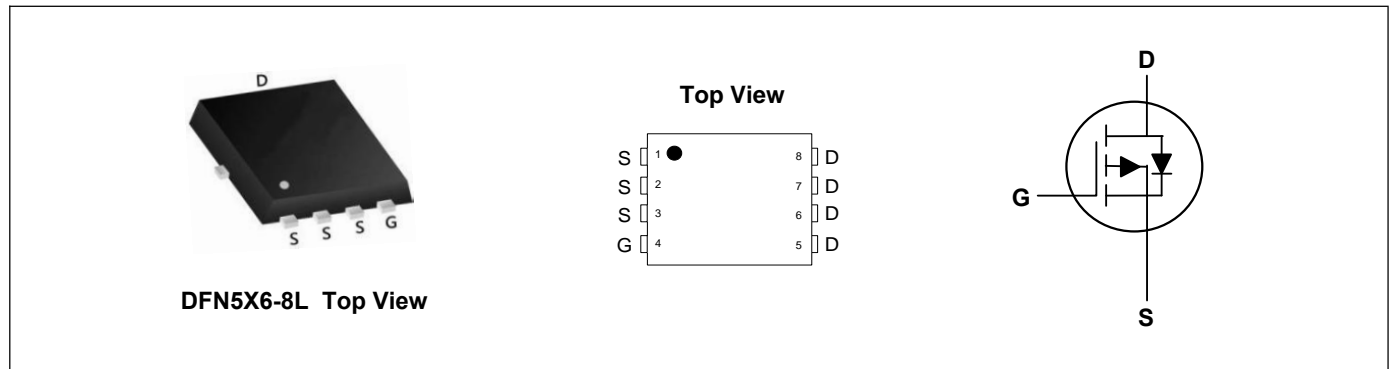
Applications

- High Frequency Point-of-Load, Synchronous Buck Converter
- Networking DC-DC Power System
- Load Switch

Product Summary



V_{DS}	-30	V
I_D	-92	A
$R_{DS(ON)}$ (at $V_{GS}=-10V$)	4.5	m Ω
$R_{DS(ON)}$ (at $V_{GS}=-4.5V$)	7.2	m Ω



Absolute Maximum Ratings ($T_C=25^\circ\text{C}$, unless otherwise noted)

Parameter	Symbol	Rating	Units
Drain-Source Voltage	V_{DS}	-30	V
Gate-Source Voltage	V_{GS}	± 20	V
Continuous Drain Current ¹	$I_D@T_C=25^\circ\text{C}$	-92	A
Continuous Drain Current ¹	$I_D@T_C=100^\circ\text{C}$	-56	A
Pulsed Drain Current ²	I_{DM}	-200	A
Single Pulse Avalanche Energy ³	E_{AS}	180	mJ
Avalanche Current	I_{AS}	60	A
Total Power Dissipation	$P_D@T_C=25^\circ\text{C}$	85	W
Storage Temperature Range	T_{STG}	-55 to 150	$^\circ\text{C}$
Operating Junction Temperature Range	T_J	-55 to 150	$^\circ\text{C}$

Thermal Characteristics

Parameter	Symbol	Typ	Max	Unit
Thermal Resistance Junction-Ambient ¹	$R_{\theta JA}$	---	37	$^\circ\text{C/W}$
Thermal Resistance Junction-Case ¹	$R_{\theta JC}$	---	1.5	$^\circ\text{C/W}$

Electrical Characteristics ($T_J=25^\circ\text{C}$, unless otherwise noted)

Parameter	Symbol	Conditions	Min	Typ	Max	Unit
Drain-Source Breakdown Voltage	BV_{DSS}	$V_{GS}=0V, I_D=-250\mu A$	-30	---	---	V
Static Drain-Source On-Resistance	$R_{DS(ON)}$	$V_{GS}=-10V, I_D=-24A$	---	3.5	4.5	$m\Omega$
		$V_{GS}=-4.5V, I_D=-12A$	---	6	7.2	$m\Omega$
Gate Threshold Voltage	$V_{GS(th)}$	$V_{GS}=V_{DS}, I_D=-250\mu A$	-1.2	---	-2.5	V
Drain-Source Leakage Current	I_{DSS}	$V_{DS}=-30V, V_{GS}=0V$	---	---	-1	μA
Gate-Source Leakage Current	I_{GSS}	$V_{GS}=\pm 20V, V_{DS}=0V$	---	---	± 100	nA
Forward Transconductance	g_{fs}	$V_{DS}=-15V, I_D=-10A$	---	20	---	S
Total Gate Charge	Q_g	$V_{DS}=-15V, V_{GS}=-10V, I_D=-20A$	---	84	---	nC
Gate-Source Charge	Q_{gs}		---	20	---	
Gate-Drain Charge	Q_{gd}		---	9	---	
Turn-On Delay Time	$T_{d(on)}$	$V_{DS}=-15V, V_{GS}=-10V, R_G=6\Omega, I_D=-1A$	---	22	---	ns
Rise Time	T_r		---	25	---	
Turn-Off Delay Time	$T_{d(off)}$		---	160	---	
Fall Time	T_f		---	98	---	
Input Capacitance	C_{iss}	$V_{DS}=-15V, V_{GS}=0V, f=1\text{MHz}$	---	4500	---	pF
Output Capacitance	C_{oss}		---	390	---	
Reverse Transfer Capacitance	C_{rss}		---	150	---	

Drain-Source Diode Characteristics

Parameter	Symbol	Conditions	Min	Typ	Max	Unit
Diode Forward Voltage ²	V_{SD}	$V_{GS}=0V, I_S=-1A, T_J=25^\circ\text{C}$	---	---	-1.3	V
Reverse Recovery Time	t_{rr}	$I_F=-20A, di/dt=100A/\mu s, T_J=25^\circ\text{C}$	---	32	---	nS
Reverse Recovery Charge	Q_{rr}		---	18	---	nC

Note:

- 1.The data tested by surface mounted on a 1 inch² FR-4 board with 2OZ copper.
- 2.The data tested by pulsed , pulse width $\leq 300\mu s$, duty cycle $\leq 2\%$
- 3.The EAS data shows Max. rating . The test condition is $V_{DD}=-15V, V_{GS}=-10V, L=0.1\text{mH}$

Typical Characteristics

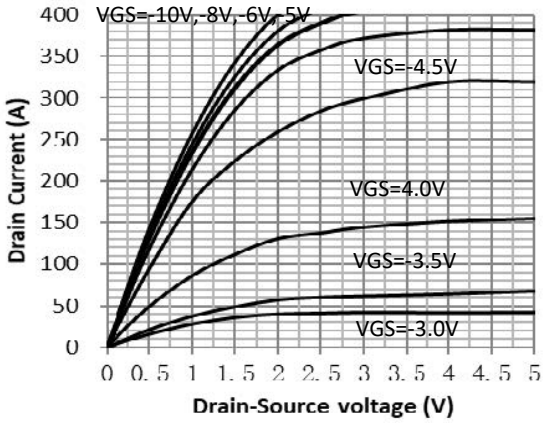


Fig.1 Typical output Characteristics

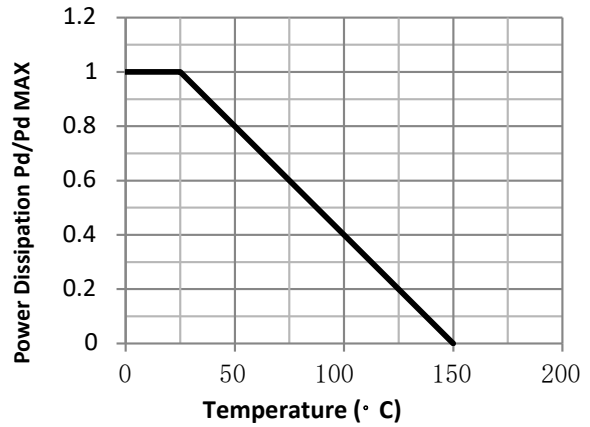


Fig.2 Power Dissipation

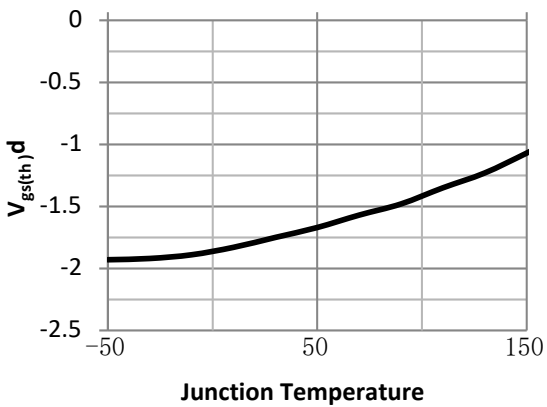


Fig.3 Threshold Voltage V.S Junction Temperature

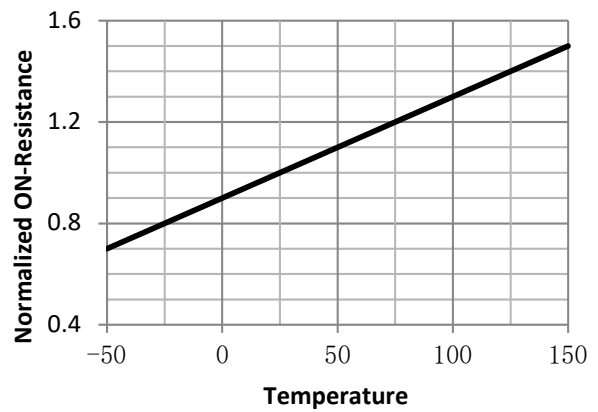


Fig.4 Resistance V.S Drain Current

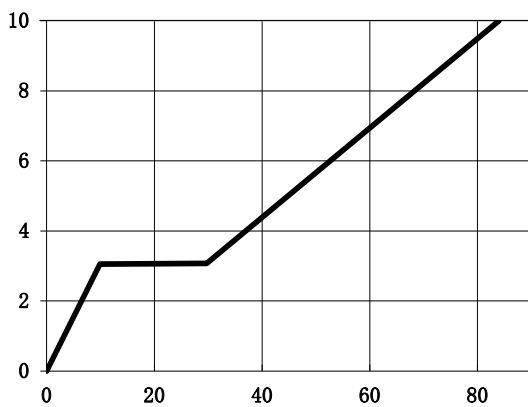


Fig.5 Gate-Charge Characteristics

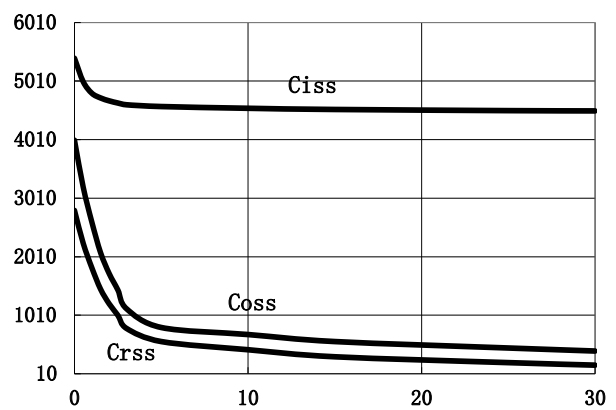


Fig.6 Capacitance Characteristics

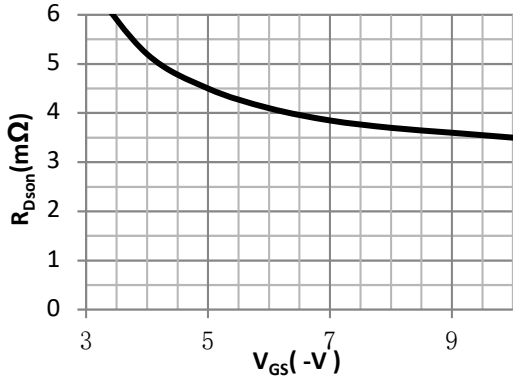


Fig.7 On-Resistance VS Gate Source Voltage

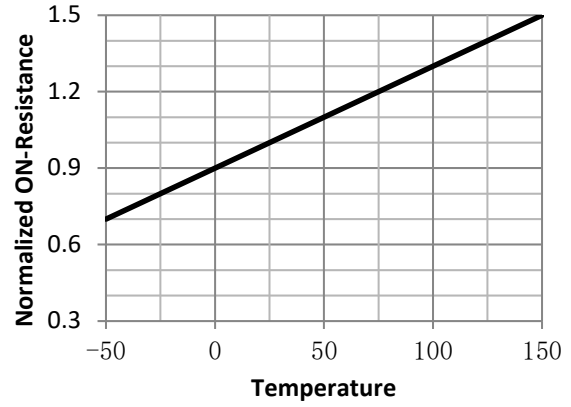


Fig.8 On-Resistance V.S Junction Temperature

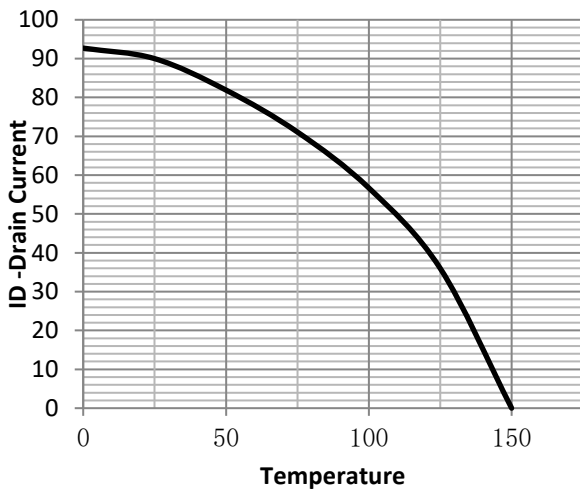


Fig.9 ID-Junction Temperature

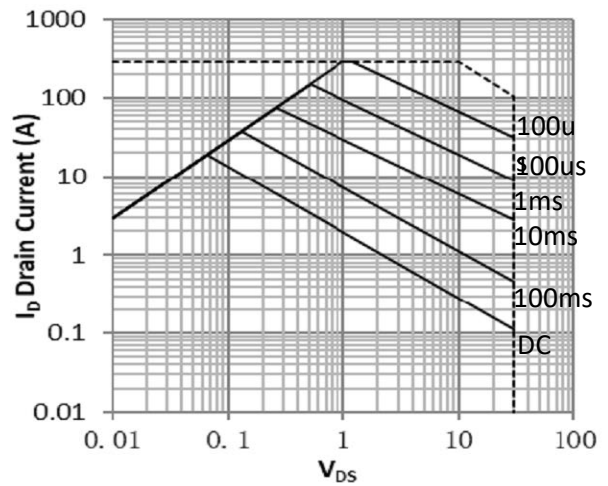
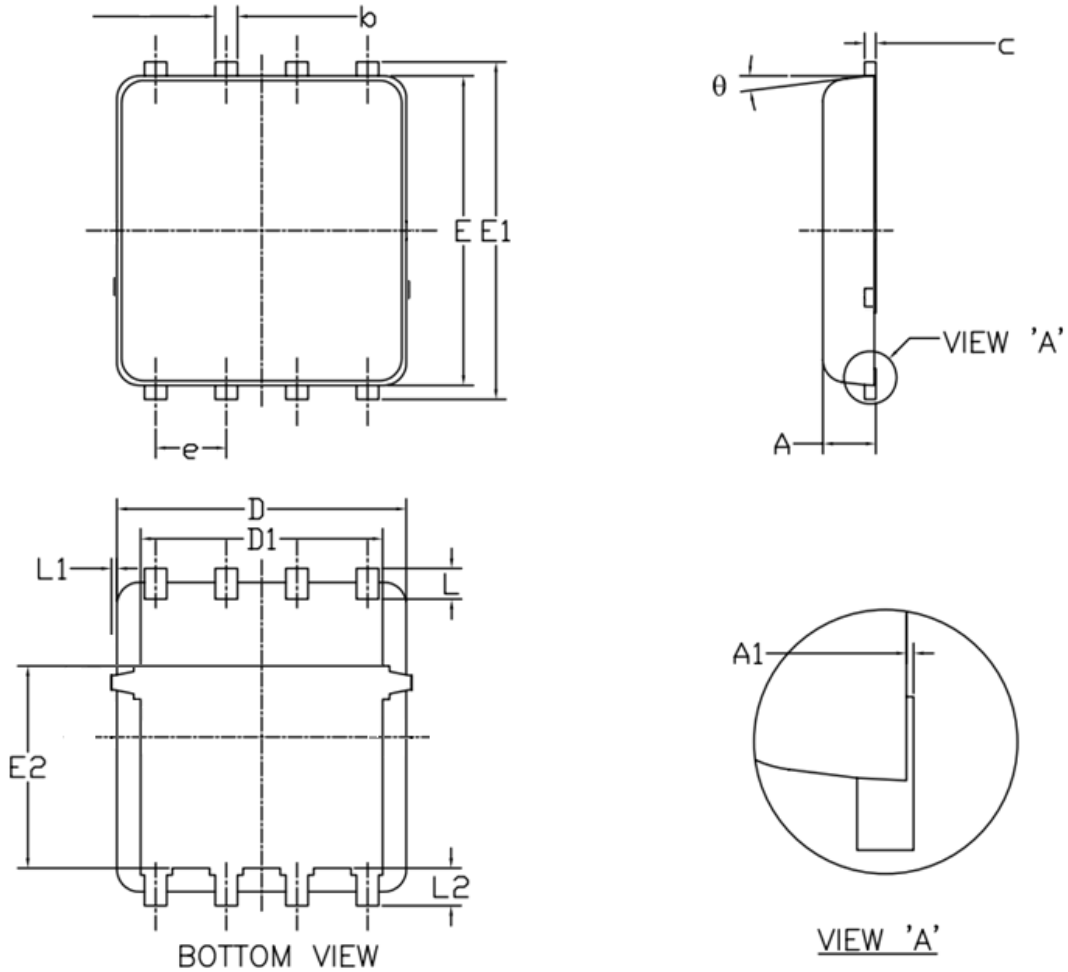


Fig.10 Maximum Forward Biased Safe Operating Area

DFN5X6-8L Package Outline Dimensions



Symbol	Dimensions (unit:mm)			Symbol	Dimensions (unit:mm)		
	Min	Typ	Max		Min	Typ	Max
A	0.90	1.00	1.20	E1	5.90	6.10	6.35
A1	0.00	--	0.05	E2	3.38	3.58	3.92
b	0.30	0.40	0.51	e	1.27 BSC		
c	0.20	0.25	0.33	L	0.51	0.61	0.71
D	4.80	4.90	5.40	L1	--	--	0.15
D1	3.61	4.00	4.25	L2	0.41	0.51	0.61
E	5.65	5.80	6.06	θ	0°	--	12°